

SECTION 4

THREADERS & DIES

R12+ Dropheads
R12+ Segmental Dies
R12+ Threader Sets
Universal Die Head
Universal Dies
Enclosed Dropheads
Enclosed Ratchet Threader Sets
Block Dies
Double Deep™ Oilers
Threadguard Cutting Oil
5301PD Power Drive
700PD Power Drive
601PD Power Drive





PIPE TOOLS & VISES
SINCE 1896



DHR121 1/2NPT

R12+ Dropheads

FEATURES

- R12+ Dropheads ship with longer lasting, high speed steel dies whereas competitor uses alloy dies.
- Precise, segmental dies inside cut an impressive, true thread.
- Drophead with installed dies thread steel and stainless steel pipe.
- Dropheads can be used manually or with a power drive.

Catalog No.	Item Code	Size	Weight	
			lbs	kg
DHR12 1/2NPT	05626	1/2" NPT	3.6	1.6
DHR12 3/4NPT	05628	3/4" NPT	3.6	1.6
DHR12 1NPT	05630	1" NPT	4.2	1.9
DHR12 1 1/4NPT	05632	1 1/4" NPT	4.7	2.1
DHR12 1 1/2NPT	05634	1 1/2" NPT	5.1	2.3
DHR12 2NPT	05636	2" NPT	5.4	2.5

Double Deep™ Oiler / Oil - p. 61

R12+ Segmental Dies

FEATURES

- R12+ Segmental Dies are made of high speed steel which lengthens die life.
- Dies are right-hand configuration only and uncoated.
- Precision manufactured by modern CNC machines.

Catalog No.	Item Code	Size	Standard Pack	Weight	
				lbs	kg
R12DN 1/2	05606	1/2" NPT	4	0.2	0.1
R12DN 3/4	05608	3/4" NPT	4	0.2	0.1
R12DN 1	05610	1" NPT	4	0.3	0.1
R12DN 1 1/4	05612	1 1/4" NPT	4	0.3	0.1
R12DN 1 1/2	05614	1 1/2" NPT	4	0.5	0.2
R12DN 2	05616	2" NPT	4	0.5	0.2

Double Deep™ Oiler / Oil - p. 61



WHY REED?
REED R12+ series is made in USA. HSS dies last longer than alloy dies, especially if used with power drives.

R12DN1

R12+ Threader Sets

FEATURES

- Choose the number of dropheads needed for an NPT set.
- Case provides secure position of threader components for transport.

Catalog No.	Item Code	Size	Weight	
			lbs	kg
R12NPT-3	05712	1/2", 3/4", 1" NPT	16.4	7.5
R12NPT-4	05714	1/2", 3/4", 1", 1 1/4" NPT	21.1	9.6
R12NPT-6	05720	1/2", 3/4", 1", 1 1/4", 1 1/2", 2" NPT	31.6	14.4
△ R12NPT-6-BOX	05721	1/2" - 2" NPT with R12BOX	52.6	23.9

ACCESSORIES

Catalog No.	Item Code	Description	Weight	
			lbs	kg
R12RRHC	05638	Ratchet Ring & Handle	5.0	2.3
△ R12BOXRPF	05717	Heavy-Duty Plastic Case with R12+ Drophead Slots	6.5	2.9

NOTE: Most REED R12+ threader sets DO NOT include the R12 case.

Order separately as #05717.

Double Deep™ Oiler / Oil - p. 61



R12NPT-6-BOX

Universal Die Head

FEATURES

- R811 die head holds any NPT or BSPT thread or bevel-type REED Universal Dies.
- Works on machines with through head oiling capabilities.

Catalog No.	Item Code	Pipe Capacity		Weight	
		in-nom.	actual O.D. mm	lbs	kg
R811	05380	1/8 - 2	3 - 50	12.5	5.7

Double Deep™ Oiler / Oil - p. 61
5031PD Power Drives - p. 62



R811

Universal Dies

FEATURES

- REED Universal Dies give clean threads and long die life as proven by years of field and lab testing.
- HSS universal dies withstand high temperature without losing hardness which means they cut faster than alloy dies at room temperature.

Catalog No.	Item Code	Size	Material	Standard Pack	Weight	
					lbs	kg
UHNI-2-3/4	05815	1/2" - 3/4" NPT	HSS	4	1.5	0.7
UHNI-2	05820	1 - 2" NPT	HSS	4	1.3	0.6
UHSI-2-3/4	05825	1/2" - 3/4" NPT	HSS for Stainless	4	1.5	0.7
UHSI-2	05830	1" - 2" NPT	HSS for Stainless	4	1.3	0.6



UHN1-2



WHY REED?

REED Universal Dies are made in the USA, lab tested and proven, then field tested and approved by threading specialist contractors and industrial users. Years of on-going lab and field tests have shown REED Universal Dies give clean threads and long die life.

Enclosed Dropheads

FEATURES

- Ready-to-use dropheads have the dies in-line, every time, making them quick to grab and use.
- Low-cost, disposable, compact yet high-quality dies.

Catalog No.	Item Code	Description	Weight	
			lbs	kg
R11 1/4NPT	05210	1/4" NPT Drophead	1.2	0.5
R11 3/8NPT	05211	3/8" NPT Drophead	1.2	0.5
R11 1/2NPT	05212	1/2" NPT Drophead	1.3	0.6
R11 3/4NPT	05213	3/4" NPT Drophead	1.4	0.6
R11 1NPT	05214	1" NPT Drophead	1.9	0.9
R11 1 1/4NPT	05215	1 1/4" NPT Drophead	2.0	0.9
R15 1 1/2NPT	05226	1 1/2" NPT Drophead	3.7	1.7
R20 2 NPT	05227	2" NPT Drophead	3.4	1.5

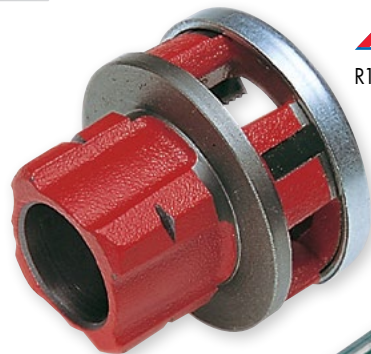
ACCESSORIES

Catalog No.	Item Code	Description	Weight	
			lbs	kg
R11SC	05230	Ratchet Ring and Handle for R11 Dropheads	3.7	1.7
R20SC	05231	Ratchet Ring and Handle for 2" Drophead	5.4	2.5
R20 ADAPTER	05234	Adapts R11 Dropheads to R20SC	0.6	0.3

601PD Power Drive - p. 63



R15 1 1/2NPT



R20 ADAPTER



R20SC



R11SC with R11 3/8NPT



PIPE TOOLS & VISES
SINCE 1896

Enclosed Ratchet Threader Sets

✓ WHY REED?

No alignment problems as dies are enclosed within each drophead. These complete dropheads are less expensive than models requiring individual segment replacement.



FEATURES

- Dies are enclosed within each drophead which ensures superior alignment.
- High quality dies and dropheads made on CNC machines.
- Dies are alloy steel, heads are malleable iron.
- Sets are the lightest drophead sets available, size for size.

Catalog No.	Item Code	Range	Heads Include	Weight	
				lbs	kg
DH82-4	05200	1/2" - 1 1/4"	4	12.2	5.5
DH82-3	05201	3/8" - 1 1/4"	5	13.4	6.1
DH81-2	05202	1/4" - 1"	5	12.7	5.8
DH81-4	05204	1/2" - 1"	3	10.1	4.6
DH84-4	05222	1/2" - 2"	6	22.8	10.4
DH84-5	05223	3/4" - 2"	5	21.5	9.8
DH84-6	05224	1" - 2"	4	20.0	9.1
DH84-7	05225	1 1/4" - 2"	3	18.2	8.3

Block Dies

EXCLUSIVE
TOOL



2SP1 1/2

FEATURES

- REED's block dies thread both carbon steel and stainless steel with no die change required.
- Produce the most precise thread of any die.
- The double-threaded throats literally pull the die onto the pipe making it easy to start threading.

Catalog No.	Item Code	Size	Pipe Material	Thread	Block Size	Stocks that Dies Fit	Weight	
							lbs	kg
2SP1/2	05524	1/2"	Steel / Stainless Steel	NPT	4 x 4	S84, SD84, 84	3.0	1.4
2SP3/4	05526	3/4"	Steel / Stainless Steel	NPT	4 x 4	S84, SD84, 84	2.9	1.3
2SP1	05528	1"	Steel / Stainless Steel	NPT	4 x 4	S84, SD84, 84	3.4	1.5
2SP1 1/4	05530	1 1/4"	Steel / Stainless Steel	NPT	4 x 4	S84, SD84, 84	3.2	1.5
2SP1 1/2	05532	1 1/2"	Steel / Stainless Steel	NPT	4 x 4	S84, SD84, 84	3.0	1.4
2SP2	05534	2"	Steel / Stainless Steel	NPT	4 x 4	S84, SD84, 84	2.6	1.2

✓ WHY REED?

The REED block die is machined as a unit to ensure perfect threads and to eliminate the danger of inserting a chaser into the wrong slot.



ADJUSTABLE GUIDE THREADER SETS

Catalog No.	Item Code	Range	Dies Included	Block Size	Weight	
					lbs	kg
SD84-4	05151	1/2" - 2"	6	4" x 4"	29.1	13.2

Double Deep™ Oiler / Oil - p. 61

Double Deep™ Oiler System

FEATURES

- Oiler includes oil gun with 60 inch hose, drip pan, bucket, handle and one gallon of thread cutting oil.
- Deep (8 ½ inch) steel bucket, steel drip pan/chips tray, and sturdy aluminum oil gun for OLBUCKET1 demonstrate the quality construction.
- Metal splash guard OLGUARD with magnetic feet breaks up liquid motion to keep the oil in the bucket by interrupting centripetal force.
- OLLID locking lid protects oil from weather events and transit messes.



OLBUCKET1

EXCLUSIVE FEATURE

Catalog No.	Item Code	Description	Weight	
			lbs	kg
△ OLBUCKET1*	06150	Double Deep™ Oiler	21.0	9.5

*EXCLUSIVE FEATURE: 60 inch hose, steel drip pan

ACCESSORIES

Catalog No.	Item Code	Description
△ OLHOSE	97370	60" Hose (1524 mm)
OLDRIPPAN	97375	Metal Drip Pan/Chip Tray - 20 Gauge Sheet Steel
OLOILBUCKET	97376	Metal Bucket - 20 Gauge Sheet Steel
OLBUCKETF	97380	Oil Pan Strainer
OLGUN	97395	Oil Gun
OLLID	06153	Protective Lid with Latches
OLGUARD*	06155	Splash Guard with Magnets

*EXCLUSIVE TOOL

WHY REED?

Much stronger and longer-lasting than oilers with plastic drip pans/chip trays. 60" (not 54") hose maximizes user convenience.



OLLID



OLGUARD



OLGUARD assembly

Threadguard Cutting Oil

FEATURES

- Successful hand and machine threading depends on this quality cutting oil.
- Offered in both clear and dark oil.
- Prolongs die life.

Catalog No.	Item Code	Type	Size	Bottles to Case	Weight	
					lbs	kg
OGD	06120	Dark Oil	Gallon	6	8.2	3.7
OGC	06112	Clear Oil	Gallon	6	7.9	3.6



OGC

OGD

WHY REED?

Higher lubricity for longer die life and faster cutting speed.



OGD in use



PIPE TOOLS & VISES
SINCE 1896

Flat Workspace
on Housing



5301PD Power Drive

FEATURES

- Durable units for power drive functions.
- 5301PD can be combined with REED's RG6S or RGC0MBO2 for power roll grooving.
- 5301PDCOMP "complete" comes with HSS (High Speed Steel) Universal Dies for best threads.

Catalog No.	Item Code	Description	Pipe Capacity		Gross Weight	
			in-nom.	actual O.D. mm	lbs	kg
△ 5301PD	05301***	Power Drive 38 RPM, 120V with Footswitch only	1/8" - 2 Pipe 1/4" - 2 Bolt**	3 - 50 Pipe 6 - 50 Bolt	93.0	43.0
△ 5301PDCOMP*	05303***	Power Drive Complete 38 RPM, 120V, NPT Dies	1/8" - 2 Pipe 1/4" - 2 Bolt**	3 - 50 Pipe 6 - 50 Bolt	208.0	95.0



*COMPLETE units contain Power Drive, Footswitch, Tripod, Carriage with Lever, Pipe Cutter, Reamer, R811 Universal Die Head, Transporter, Oiler, 1 gallon Threadguard Cutting Oil and one set each High Speed Steel Universal Dies: 1/2" - 3/4" and 1" - 2" NPT.
** Bolt dies not available from REED.

***Model ships freight.

WHY REED?

Exclusive, flat top of housing is ideal for placing tools. 5301PD includes long-lasting high speed steel (HSS) dies, not alloy dies. All steel oiler (not plastic) with 60" (not 54") hose included with complete units.

ACCESSORIES

Catalog No.	Item Code	Description	Weight	
			lbs	kg
5301PDTP	05305	Tripod Only	26.0	11.8
5301PDTRANSPRTR	05306	Transporter	28.0	12.7
5301PDCARRIAGE	05307	Carriage with Lever	16.0	7.3
5301PDREAMER	05308	Reamer	6.8	3.1
5301PDCUTTER	05309	1/8" - 2" Pipe Cutter	8.5	3.9
5301PDBA-PR	95570	Brush Assembly	0.05	0.02
PDGFI	05277	Ground Fault Interrupter	0.8	0.4

Roll Groovers - p. 66
Double Deep™ Oiler / Oil - p. 61
Universal Die Head and Dies - p. 59



700PD Power Drive

FEATURES

- Workhorse model, designed for threading pipe and conduit up to 2" (50 mm) in diameter.
- Vinyl-coated handle provides better electrical safety to the user.
- Neoprene sealed switch helps keep dirt out and prolongs switch life.
- Turns at 28 RPM.

Catalog No.	Item Code	Description	Pipe Capacity		Gross Weight	
			in-nom.	actual O.D. mm	lbs	kg
△ 700PD	05270	Power Drive 120V, 60 Hz	1/8" - 2	3 - 50	40.5	18.4
△ 700PDSET	05272	Power Drive 120V, 60 Hz, six R12+ Dropheads for 1/2" - 2" NPT	1/2" - 2 NPT	12 - 50	67.0	30.5

SAFETY ARM

Catalog No.	Item Code	Description	Pipe Capacity		Weight	
			in-nom.	actual O.D. mm	lbs	kg
700V	05275	Safety Arm (vise) for 700PD & 700APD Power Drives	1/8" - 2	3 - 50	7.0	3.2

R12+ Dropheads and Dies - p. 58
Power Units for Drilling / Tapping - p. 48
Double Deep™ Oiler / Oil - p. 61
Utility Clutch - p. 50

^ WARNING: Cancer and Reproductive Harm. www.P65Warnings.ca.gov



700PD and Oiler on Tripod



601PD Power Drive

FEATURES

- One of the lightest electric power drives on the market.
- Safety arm and carrying case included.
- A great alternative to hand-threading; uses enclosed dropheads.

Catalog No.	Item Code	Description	Pipe Capacity		Gross Weight	
			in-nom.	actual O.D. mm	lbs	kg
601PD	05240	Power Drive & Safety Arm, 110-120 volts, 50/60 Hz, with Case	1/4 - 1 1/4	6 - 32	25.0	11.4

SAFETY ARM

Catalog No.	Item Code	Description	Pipe Capacity		Weight	
			in-nom.	actual O.D. mm	lbs	kg
601V	05242	Replacement Safety Arm for 601PD Power Drive	1/4 - 1 1/4	6 - 32	5.7	2.6

POWER DRIVE UNIT WEIGHT

A measure of the tool weight the operator must support.

Catalog No.	Item Code	Weight	
		lbs	kg
601PD	05240	15	6.8
700PD	05270	31	14.3

Enclosed Dropheads - p. 59
Power Units for Drilling / Tapping - p. 48



ELIMINATE HAND THREADING



Power Drive GFI

FEATURES

- Stay safe and use a ground fault interrupter with electric power tools.

Catalog No.	Item Code	Description	Weight	
			lbs	kg
PDGFI	05277	Ground Fault Interrupter	0.8	0.4



OUR MISSION

REED will develop a growing market position in the pipe tool industry by providing the most innovative and the highest quality tools, the best customer service, the lowest total cost and the greatest value to distributors and tool users.

REED seeks to utilize very effective personnel, the most modern, cost-effective equipment, and total quality management concepts in order to achieve challenging objectives. REED also seeks to provide a great place to work, to be environmentally responsible and to be a good corporate citizen.

