

2021

NEW TOOLS



PIPE TOOLS & VISES
SINCE 1896



CUTTERS & CUTTER WHEELS

C Cutters	2
Hinged Pipe Cutters	2
Rotary Pipe Cutters	2

PLASTIC PIPE TOOLS

Clean Ream Extreme®	3
Bevel Boss™ Cordless Pipe Beveler	3
True Peel® PE Prep Tools	4
Guillotine Pipe Cutters	4
Bear Hug™ PE Squeeze Tool	5
Static Grounding Device	5

WATER SERVICES TOOLS & MACHINES

Pump Stick® Cordless Water Transfer Pump	6
Drill-Powered Hydrostatic Test Pump	7
Valve & Curb Keys	7
Ratcheting Valve Keys	7
Cordless Power Drive For Waterworks	8
Valve Operator	9
Utility Clutch	9
Copper Shut-Off Tools	10

OILERS

Double Deep™ Oiler System	10
---------------------------	----

VICES

Tripod Pipe Vise	11
------------------	----

WRENCHES

Thru-Bolt™ 4-In-1 Ratchet Wrench	11
Smooth Jaw Wrench	11

GENERAL PIPE WORKING TOOLS

Mechanical Hot Tapping Machines	12
Torpedo Levels	12

NEW TOOLS AROUND THE CORNER!



**VIDEO
TRAINING**



C CUTTERS

FEATURES

- Easy-to-grip cutters easily snap on to copper tubing for a quick, clean cut.
- Compact c-shape means no handle swing space is required.
- TC5075SLR adjusts to fit multiple tubing sizes, **including metric**.

Catalog No.	Item Code	Pipe Capacity		Application	Weight	
		in-nom.	actual O.D. mm		lbs	kg
TCK3SL	03402	1/2, 3/4, 1	15.9, 22.2, 28.6	Copper, CPVC	1.9	0.9
TC5075SLR	03403	1/2 - 3/4	15 - 22	Copper (K, L and M), CPVC	0.4	0.16
TCK50SLR	03412	1/2	15.9	Copper, CPVC	0.4	0.17
TCK75SLR	03413	3/4	22.2	Copper, CPVC	0.5	0.22
TCK1SLR	03414	1	28.6	Copper, CPVC	0.4	0.19



HINGED PIPE CUTTERS WITH HELPER HANDLES

FEATURES

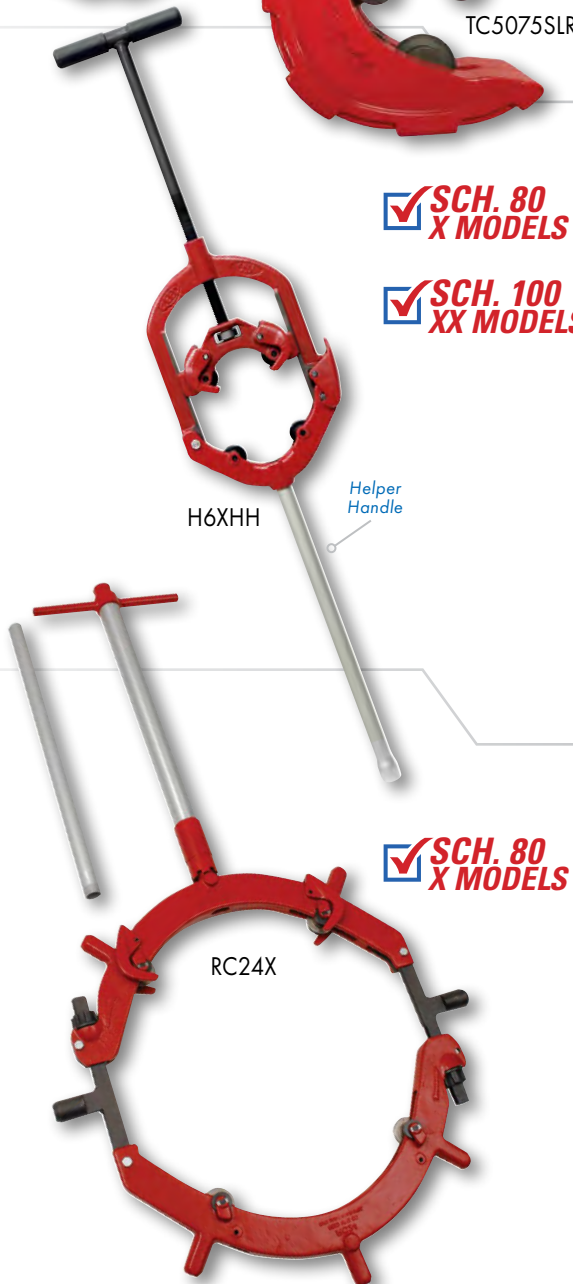
- Manual cutter, with hinge opening, fits around pipe securely with four cutting wheels.
- "Helper handle" allows two people to use team effort for bigger, tougher cuts.
- Great choice for cutting well casing.
- Handle can be removed for use as traditional cutter.

Catalog No.	Item Code	Pipe Capacity		Length		Weight	
		in-nom.	actual O.D. mm	in	mm	lbs	kg
△H6XHH	03139	4 - 6	114 - 182	51	1295	21.8	9.9
△H8XHH	03147	6 - 8	168 - 240	58	1473	23.6	10.7
△H12XHH	03157	8 - 12	219 - 356	63	1600	36.5	16.6
△H8XXHH	03149	6 - 8	168 - 240	58	1473	23.6	10.7
△H12XXHH	03159	8 - 12	219 - 356	63	1600	36.5	16.6

X Models for Sch. 80 steel / XX Models for Sch. 100 steel

✓ **SCH. 80
X MODELS**

✓ **SCH. 100
XX MODELS**



ROTARY PIPE CUTTERS

FEATURES

- Models added to cut Sch 80 stainless steel / Sch 40 steel pipe.
- Pipe snaps off squarely once the operator completes the cut.
- Excellent for cold cuts.
- Designed to cut large diameter pipe, the larger blade exposure (.800" / 20.3 mm) of RCX cutter wheels penetrates thick pipe walls of steel, heavy wall steel, and stainless steel.

Catalog No.	Item Code	Pipe Capacity - Steel		Length		Weight	
		in-nom.	actual O.D. mm	in	mm	lbs	kg
RC20X	03270	20 - 22	476 - 572	106	2680	89	40.5
RC24X	03271	24 - 26	584 - 660	111	2807	107	48.6
△RC30X	03272	28 - 34	698 - 864	96	2438	283	128.6
△RC36X	03273	32 - 36	813 - 915	96	2438	295	134.1
△RC42X	03274	40 - 42	1016 - 1067	108	2743	325	147.7

CLEAN REAM EXTREME®

FEATURES

- Clean leftover pipe and solvent cement residue from Sch. 40 PVC, CPVC, or ABS fittings.
- Reduce labor time and materials costs by **reusing the fittings**.
- Pilot diameter aids in cutting on center and stops tool at the proper cutting depth.
- Use high torque, low RPM drill setting to reduce heat caused by friction and to provide the cleanest ream.

PERFECT SIZE FOR COMMERCIAL POOL & SPA REPAIRS



PPR250

CHECK OUT THE FULL LINE-UP

Catalog No.	Item Code	Description	Shaft Size	Weight	
				lbs	kg
^PPR250	04532	Reams 2 1/2" Sch. 40 PVC, CPVC & ABS Fittings	3/8" Hex	0.80	0.36

BEVEL BOSS™ CORDLESS PIPE BEVELERS

FEATURES

- Portable unit uses battery power to bevel plastic pipe quickly and safely.
- Adjustable beveler creates external bevel on 2" and larger diameter plastic pipe.
- Ideal for large diameter pipe due to portability on jobsite.
- Operator safety is important and the REED system provides a secure way to cut a consistent bevel.
- Adjust bevel length on pipe by choosing the right Router Bit.
- Pipe beveler adapter heads convert popular die grinders (Bosch®, DeWalt®, Milwaukee®) to serve as plastic pipe bevelers.



CPBDK

CPBMADP assembled, grinder not included

CPBDK in use

Catalog No.	Item Code	Description	Capacity		Weight	
			in. nom	mm	lbs	kg
^CPBDBT	04658	Base Tool with Beveler Adapter and DeWalt® die grinder	2 & up	50	3.95	1.8
^CPBDK	04659	Kit with Beveler Adapter, RBIT1 Router Bit, DeWalt® die grinder, Battery and Charger	2 & up	50	9.3	4.2
^CPBDKE	04666	Kit with Beveler Adapter, RBIT1 Router Bit, DeWalt® Die Grinder - EXPORT ONLY	2 & up	50	5.5	2.5

BEVEL BOSS™ PIPE BEVELER ADAPTER HEADS*

Catalog No.	Item Code	Description	Weight	
			lbs	kg
CPBBADP	04646	Adapter Head Only, Fits Bosch® die grinder	1.25	0.57
CPBDADP	04648	Adapter Head Only, Fits DeWalt® die grinder	1.33	0.60
CPBMADP	04649	Adapter Head Only, Fits Milwaukee® die grinder	1.38	0.63

*Router bit not included.

ROUTER BITS*

Catalog No.	Item Code	Description	Bevel Length
^RBIT1	44644	Carbide Router Bit, 15°	1/8 - 5/8
^RBIT2	44648	Carbide Router Bit, 12°	7/16 - 1

*International users may need to change collet on die grinder.



RBIT1

CPBMADP





PIPE TOOLS & VISES
SINCE 1896

TRUE PEEL® PE PREP TOOLS

FEATURES

- Prepares the ends of PE pipe and tapping tees for electrofusion.
- Removes 0.009" - 0.12" (0.23 mm - 0.3 mm) peel thickness.
- Spring actuated blade gives a complete peel, even on out-of-round pipe.
- Observation window indicates the completion of the peel.
- Close fitting mandrel rounds pipe that may be oval.
- Hardened tool steel cutting blade with **two cutting edges** for twice the life.
- Includes a protective carrying case.



PEP75IPS11
in use

Catalog No.	Item Code	Description	Weight	
			lbs	kg
PEP50CTS7	04634	Fits 1/2" CTS SDR7 .090 Wall	0.9	0.41
PEP75IPS11	04635	Fits 3/4" IPS DR11 .095 Wall	1.2	0.54
PEP1IPS7	04624	Fits 1" IPS DR7 .188 Wall	1.4	0.6
PEP1CTS7	04627	Fits 1" CTS SDR7 .161 Wall	1.3	0.6
PEP1CTS115	04636	Fits 1" CTS SDR11.5 .099 Wall	1.3	0.6
PEP1IPS11	04637	Fits 1" IPS DR11 .120 Wall	1.4	0.6
PEP125IPS10	04626	Fits 1-1/4" IPS DR10 .166 Wall	1.9	0.9
PEP125IPS11	04638	Fits 1 1/4" IPS DR11 .151 Wall	1.9	0.9
PEP125CTS11	04625	Fits 1 1/4" CTS SDR11 .121 Wall	1.5	0.7
PEP2IPS11	04639	Fits 2" IPS DR11 .216 Wall	3.1	1.4

TRUE PEEL® METRIC

Catalog No.	Item Code	Description
PEP32MM	04680	Fits 32mm DR11, 3.0mm Wall Thickness
PEP40MM	04681	Fits 40mm DR11, 3.7mm Wall Thickness
PEP63MM	04683	Fits 63mm DR11, 5.8mm Wall Thickness

GUILLOTINE PIPE CUTTERS

FEATURES

- Manual, guillotine style cutter slices smoothly through PE, including HDPE.
- All aluminum construction results in greater rigidity and lighter tool with 22%+ weight reduction versus prior HPC8 model.
- Greater pipe capacity, up to 9.06" O.D. fits true 8" DIPS and IPS for PE.
- Aluminum rails and crosshead have a hard anodized finish to reduce wear on sliding surfaces.
- Superior cuts with USA made blade.

✓ FITS TRUE 3"-8" DIPS & IPS

✓ CHECK OUT THE FULL LINE-UP



HPC8+
in use

Catalog No.	Item Code	Pipe Capacity		Application	Length		Weight	
		in-nom.	actual O.D. mm		in	mm	lbs	kg
^HPC8+	04609	3 - 8 DIPS & IPS	90 - 230	PE	29.6	752	27.4	12.4

BEST EVER!

VIDEO TRAINING



BEAR HUG™ PE SQUEEZE TOOL

FEATURES

- Modular PE squeeze tool system allows choice of manual hydraulic or air-over-hydraulic pump operation.
- Double bar design for squeeze confidence.
- Massive 83,400 lb. (371,000 N) squeeze force.
- Weight conscious REED design is almost 100 pounds (45 kg) less than competitive model.
- Includes two sets of color-coded pipe stops for North America Imperial (PES8BT) or metric (PES8BTM) pipe sizes.
- Maximize tool efficiency by using clean air through an FRL such as PESFRLA.

Catalog No.	Item Code	Capacity	Description	Weight	
				lbs	kg
△ PES8BT	04328	3" - 8"	Base Tool for Bear Hug™	175.0	79.5
△ PES8BTM	04715	90- 225 mm O.D.	Metric Bear Hug™ Base Tool for metric pipe	175.0	79.5

PUMP - REQUIRED FOR TOOL OPERATION

Catalog No.	Item Code	Description	Weight	
			lbs	kg
△ PESMPA	04329	2-stage Hand Pump	35.0	15.9
△ PESAPA	04330	Air-over-Hydraulic Pump	30.0	13.6

ACCESSORY

Catalog No.	Item Code	Description
PESFRLA	04331	Filter-Regulator-Lubricator



PES8BT
in use



PES8BT

**✓ CHOOSE
A PUMP**



PESMPA



PESAPA

PESFRLA

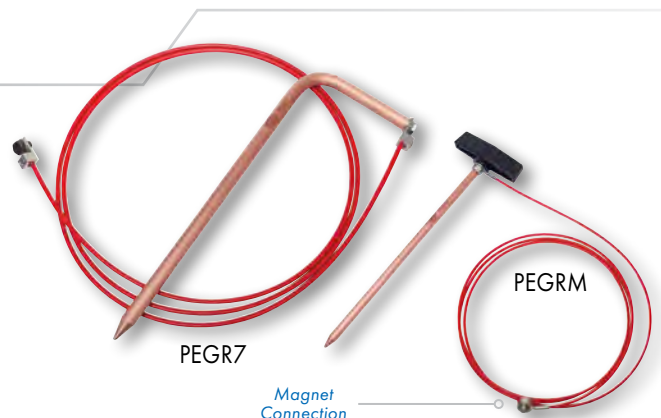


STATIC GROUNDING DEVICES

FEATURES

- Ground the work area to increase safety for the operator.
- Static electricity grounding can dissipate the charge and minimize the possibility of ignition.

Catalog No.	Item Code	Description	Weight	
			lbs	kg
PEGR7	04621	Set screw lugs, 7 foot cable	1.3	0.6
PEGRM	04622	Magnet connection, 7 foot cable	0.6	0.3



PEGR7

PEGRM

Magnet
Connection

PUMP STICK® CORDLESS WATER TRANSFER PUMP

FEATURES

- Battery operated pump transfers water at 15 gallons (57 liters) per minute.
- Compatible with different battery brands by changing the battery adapter plate.
- Adapter plates fit 18V-20V lithium ion, slide style batteries for some popular brands.
- Rugged, contractor grade, impact-resistant glass filled polycarbonate parts and aluminum body for durability and strength.
- Water-resistant, sealed power switch for safety.
- Secure, magnetic hose connection provides fast, reliable link.
- Quick change motor to lessen downtime.
- Multiple screen/filter options to suit the job.
- Ships with 6 inch, comfort grip handle.



Catalog No.	Item Code	Description	Weight	
			lbs	kg
△CP15-38B	08140	CP15 Pump with Battery Adapter Plate for Bosch® & 2Ft Hose - Base Model Battery NOT included	4.5	2.0
△CP15-38	08141	CP15 Pump Complete with 2ft Hose, 18V 4Ah Bosch® Battery & Charger in Case	12.0	5.5
△CP15-38E	08144	CP15 Pump - Export Only	6.3	2.9

BATTERY ADAPTER PLATES

Catalog No.	Item Code	Description
△CPAPDEW	98140	Fits most DeWalt® 18V-20V slide style batteries
△CPAPMIL	98141	Fits most Milwaukee® 18V slide style batteries
△CPAPMAK	98149	Fits most Makita® 18V slide style batteries
△CPAPBOSCH	98139	Fits most Bosch® 18V slide style batteries

HOSES

Catalog No.	Item Code	Description	Weight	
			lbs	kg
CPHOSE2FT	98143	2-foot (0.6 m) with magnetic connection	0.4	0.2
CPHOSE4FT	98144	4-foot (1.2 m) with magnetic connection	0.7	0.3
CPHOSE7FT	98145	7-foot (2.1 m) with magnetic connection	1.1	0.5
CP15COUP	98147	Hose Coupling with magnetic connection	0.14	0.06

SCREENS, STRAINERS & FILTERS

Catalog No.	Item Code	Description	Contents
CP15MEDSCRN	98166	Medium Screen	3
CP15FINESCRN	98167	Fine Screen	3
CP15CRSCRN	98198	Coarse Screen	3
CP15FILTER	98168	Felt Filter, 100 Micron	2
CP15SCRFLTR	98190	Screen/Filter Assortment	Fine screen (1), medium screen (1), felt filter (1)
CPMSTR	98188	Marine Strainer, Stainless Steel	1
CPRCSTR	98189	Strainer with Domed Center	1

ACCESSORIES

Catalog No.	Item Code	Description	Weight	
			lbs	kg
CP15CASE	98193	CP15 Standard Case, Red	4.7	2.1
△CP15LCASE	98194	CP15 Large Case, Red	9.0	4.1
△CP24HDLGRIP	98184	24" Handle with Grip	0.9	0.4
R5GBUCKET	01240	5-Gallon Bucket	2.1	1.0
CPSTAND	08145	Heavy-duty stand for hands-free use	1.2	0.5



DRILL-POWERED HYDROSTATIC TEST PUMP

FEATURES

- Pump includes inlet adapter from 3/4" GHT (garden hose thread) to 1/2" BSPT for easy connection to BSPT fittings.
- Lightweight since the power source is separate.
- Compatible with any 1/2" electric or 18V cordless drill.
- Keeps the worksite clear as no drop cord is needed when used with a cordless drill.
- Works on commercial and residential water systems.
- Storage case keeps the pump clean and organized.

CHECK OUT THE FULL LINE-UP



DPHTP500E

NEW MODEL FOR BSPT

Catalog No.	Item Code	Power Source	Inlet	Outlet	Maximum Capacity				Weight	
					gal/min	l/min	psi	bar	lbs	kg
DPHTP500E	08179	Drill-powered (drill not included)	1/2" BSPT	1/2" NPSM	1.3	4.5	500	34	8.8	4.0

VALVE & CURB KEYS

FEATURES

- Wide choice of attachable tools allows users to customize to their systems.
- Made in USA, REED valve keys feature strong welds at critical points.
- Heavy gauge, mechanical steel tubing shafts support a maximum torque of 200 foot-pounds.
- As a safety feature, REED valve keys bend before they break.

CHECK OUT THE FULL LINE-UP

Catalog No.	Item Code	Description	Closed Length		Weight	
			in	mm	lbs	kg
VKFHC	92348	Handle with Pentagon Key	26.00	660	3.3	1.5
VKEXT3	92351	Valve Key Extension, 3'	39.75	1010	5.0	2.3
VK2LS	92339	Lower Shaft with 2" Valve Key	43.25	1099	6.0	2.7

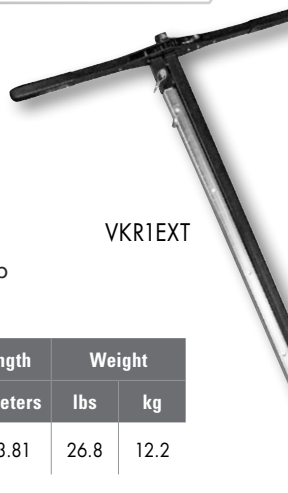
VK2LS



RATCHETING VALVE KEYS

FEATURES

- Designed with 1" square key that suits square heads such as Duvalco® gate valves.
- Ratchet handle operation reduces back strain and operator fatigue compared with using traditional valve keys.
- The included 6-foot extension shaft allows an open length reach of over 12 feet.
- When closed, they fit in crowded utility trucks, behind pickup seats, or in car trunks.



VKR1EXT



VKR1EXT in use

Catalog No.	Item Code	Description	Closed Length		Open Length		Weight	
			in	mm	ft	meters	lbs	kg
VKR1EXT	02351	1" Square Key + Extension & Ratchet Handle	45.5	1156	12' 6"	3.81	26.8	12.2

CHECK OUT THE FULL LINE-UP



PIPE TOOLS & VISES
SINCE 1896

CORDLESS POWER DRIVE FOR WATERWORKS



CPDWW

✓ ADD A BATTERY & CHARGER



CPDWWCNT

✓ CHOOSE A JOB



CPDWW for Valve Exercising



CPDWW for Tapping

FEATURES

- Adapts for tapping/drilling or valve exercising, with a quick drophead change.
- Provides plentiful torque without all the weight – just 15 lbs (6.8 kg).
- Safety first! Motor kick-off feature if unit experiences sudden jolt or torque burst.
- Battery power means no pneumatic or electric drop lines.
- Power switch has locking position, but stops almost immediately when released.
- Convenient carrying handle offers support for valve turning.
- Power source is Bosch® angle grinder. User to provide 18V Bosch® battery, sold separately.

Catalog No.	Item Code	Description	Weight	
			lbs	kg
CPDWW	05258	Cordless Power Drive for Waterworks Use - bare tool only, no battery	15	6.8

ACCESSORIES

Catalog No.	Item Code	Description	Weight	
			lbs	kg
^CPDWWCNT	05295	Digital Counter Assembly for CPDWW	2	0.9
TMPDA	08430	13/16" Adapter only	4	1.8
VOKUCLUTCH*	05287	Utility Clutch with Over Torque Protection	7.5	3.4

*See valve key options online



TMPDA

✓ CHOOSE AN ADAPTER



VOKUCLUTCH

VALVE OPERATOR

FEATURES

- Add power to valve exercising and maintenance work with this compact, easy-to-transport system.
- Utility Clutch offers over torque protection and adjustable torque setting feature.
- Individuals working alone can isolate a leak by shutting multiple valves easily with this time-saving tool.
- Accepts Valve Keys with 1" square shafts.

Catalog No.	Item Code	Description	Weight	
			lbs	kg
^VOKU700PD	05290	Kit includes 700PD electric Power Drive, VOKUCLUTCH Utility Clutch, 2" Valve Key and Extension	63.8	29

ACCESSORIES

Catalog No.	Item Code	Description	Weight	
			lbs	kg
^VOKCNT	05291	Digital Counter	1.6	0.7
VOKCCASE	05294	Case for Digital Counter	1.1	0.5

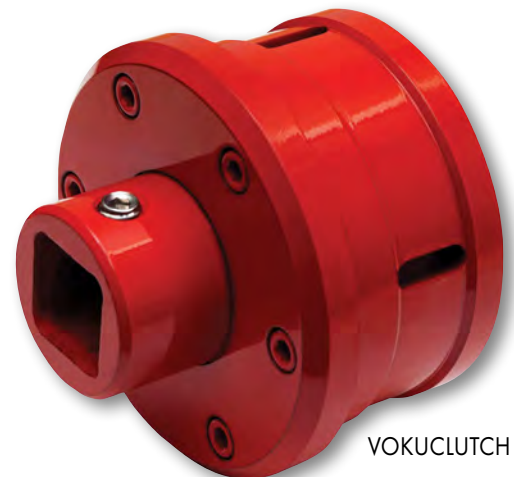


UTILITY CLUTCH

FEATURES

- Used for valve exercising with portable power drive.
- Drive socket accepts 1" square shafts, including REED Valve Keys.
- Safety first as utility clutch has over torque protection.
- Factory set torque of 150 lb-ft (203 Nm) with adjustable torque limits of 7 to 204 lb-ft (10-277 Nm).
- Fits REED 700PD power drive, along with RIDGID® 700, Milwaukee® M18™ pipe threader and DeWalt® FLEXVOLT® 60V cordless pipe threader.
- Mechanism is permanently lubricated and sealed for continued clutch performance.

Catalog No.	Item Code	Description	Weight	
			lbs	kg
VOKUCLUTCH	05287	Utility Clutch with Over Torque Protection	7.5	3.4



RIDGID® is a registered trademark of Ridgid, Inc. and is not affiliated with Reed Manufacturing. Milwaukee®, DeWalt®, Duvalco®, and Bosch® are registered trademarks and are not associated with Reed Manufacturing.



PIPE TOOLS & VISES
SINCE 1896

COPPER SHUT-OFF TOOLS



CSO1R

CSO1R in use

CSO2R
with case

FEATURES

- Tools shut-off and reshape soft copper tube service lines.
- Redesigned with detachable, ratchet drive handle, shut-off tools store compactly in a **heavy-duty case**.
- Support handle can be positioned in two different, perpendicular angles for job demands.
- Threaded feed screw is zinc-plated for corrosion resistance.
- CSO1R features steel castings to provide superior tool strength.
- Hard anodized, aluminum castings of CSO2R reduce tool weight and give long service life.

Catalog No.	Item Code	Tube Capacity		Weight	
		in	mm	lbs	kg
△ CSO1R	08201	3/4 - 1	19 - 25	10.5	4.8
△ CSO2R	08203	1 1/4 - 2	32 - 51	15.6	7.1

COMPACT UNITS WITH DURABLE CASE

BEST EVER!

OILERS

DOUBLE DEEP™ OILER SYSTEM



OLBUCKT1

OLLID

FEATURES

- Deep (8 1/2 inch) steel bucket, steel drip pan/chips tray, and sturdy aluminum oil gun for OLBUCKT1.
- Metal splash guard OLGUARD with magnetic feet breaks up liquid motion to keep the oil in the bucket by interrupting centripetal force.
- OLLID locking lid protects oil from weather events and transit messes.

Catalog No.	Item Code	Description	Weight	
			lbs	kg
△ OLBUCKT1	06150	Double Deep™ Oiler	21.0	9.5
OLLID	06153	Protective Lid with Latches	1.9	0.9
OLGUARD	06155	Splash Guard	0.6	0.3



OLGUARD



OLGUARD
assembly



VIDEO TRAINING



TRIPOD PIPE VISE

FEATURES

- Chain style vise with light duty pipe holding capacity.
- Aluminum legs reduce tripod vise weight, making R450PAL a great choice for weight-critical field use.
- At under 28 pounds, R450PAL is about 30% lighter than competitive models.
- Patented, reversible double-sided bowtie jaws with neoprene side for plastic pipe and steel jaws on other side for metal pipe.

LIGHTER WEIGHT FOR PLASTIC PIPE

Catalog No.	Item Code	Pipe Capacity		Folded Length		Weight	
		in-nom.	actual O.D. mm	in	mm	lbs	kg
^R450PAL	04456	Plastic: 1/8 - 6 Conduit: 1/8 - 2	Plastic: 10 - 178 Conduit: 10 - 51	44	1118	27.4	12.5

CHECK OUT THE FULL LINE-UP



R450PAL in use



450PJ

THRU-BOLT™ 4-IN-1 RATCHET WRENCH

FEATURES

- Sealed ratchets provide best performance and extra protection for jobsite conditions as design keeps out most dirt and debris.
- Length and shape of handle yield maximum leverage.
- Carry one wrench for all jobs, with four sockets included.
- Rugged grip handle provides a secure hold.
- Convenient directional switch located below socket.
- Sockets stay on handle – no loose sockets.

SEALED RATCHETS

L4N1XP



Catalog No.	Item Code	Sockets	Application	Handle Length		Weight	
				in	mm	lbs	kg
^L4N1XP	02692	1 1/4" & 1 1/16"	Mechanical joints and restraints, repair clamps, service saddles	17	432	2.1	1.0
		1 1/8" & 1 1/16"	Gas and water industry couplings, repair clamps, service saddles, flange bolts				
		1 1/8" & 15/16"	Flange bolts, friction clamps, hydrant break flange and some bonnet bolts				



L4N1XP in use



SMOOTH JAW WRENCH

FEATURES

- Smooth jaw wrench for work on finished and delicate surfaces.
- Added utility on the jobsite as slots fit standard and ball valve corp stop keys.
- Rotate handle end for three different disc slots sizes: 0.450", 0.390", 0.312".

CHECK OUT THE FULL LINE-UP

Catalog No.	Item Code	Maximum Actual Opening		Length		Weight	
		in	mm	in	mm	lbs	kg
RCORP3	02117	4 1/2	114	18.6	473	5.0	2.3



RCORP3

GENERAL PIPE WORKING TOOLS

NEW KITS FOR BSPT



DM3MECHBSPT

CHECK OUT THE FULL LINE-UP

MECHANICAL HOT TAPPING MACHINES

FEATURES

- Hot tap steel, galvanized, copper, brass, or aluminum pipe for installing branch connections from 3/4" to 4" valves.
- Pressure rated 300 psi for ambient temperatures or 15 psi for steam systems.
- Eliminates the need to shut down, drain, cut, refit, and refill piping systems.
- Watertight seal to allow drilling under pressure.
- Commercial and industrial applications.

Catalog No.	Item Code	Description	Valve Size	Weight	
				lbs	kg
△DM3MECHBSPT	08354	Kit for BSPT with hole saws, arbor in storage case	3/4" - 4"	12.0	5.5
△DM3MECHBSPTB	08355	Base model for BSPT in storage case, no hole saws or arbor	3/4" - 4"	10.0	4.5



TORPEDO LEVELS

FEATURES

- Durable levels with pitch, level and plumb measurements.
- Magnetic base to sit flat and secure during leveling work.
- Compact LV6WW with thumb screw to lock on conduit and eliminate dog legs.
- Nine-inch LV9PLB features ruler markings for quick and easy measurements.
- Choose model based on intended use.



LV6WW

LV9PLB

Catalog No.	Item Code	Material	Size	Description	Weight	
					lbs	kg
LV9PLB	06213	Aluminum	0.7" x 1.3" x 9"	Plumbing Use	0.5	0.2
△LV6WW	06214	Aluminum	0.7" x 1.25" x 6.5"	Waterworks Use	0.3	0.1

⚠ WARNING: Cancer and Reproductive Harm. www.P65Warnings.ca.gov

AROUND THE CORNER

- Reciprocating Saw Blades
- Ratchet Shears
- Pump Stick® Accessories

REED always has something new on the drawing table. Check our website at reedmfgco.com for the newest in pipe tools, vises, cutters, cutter wheels and more for professional trades the world over.

